

A large-scale mural of tropical plants in vibrant shades of pink, blue, and yellow. An artist with long dreadlocks is seen from behind, painting the mural. The floor is covered with various art supplies like paint cans and brushes.

R|SE ART

**COMMISSIONING**

**A LARGE-SCALE ARTWORK OR MURAL**

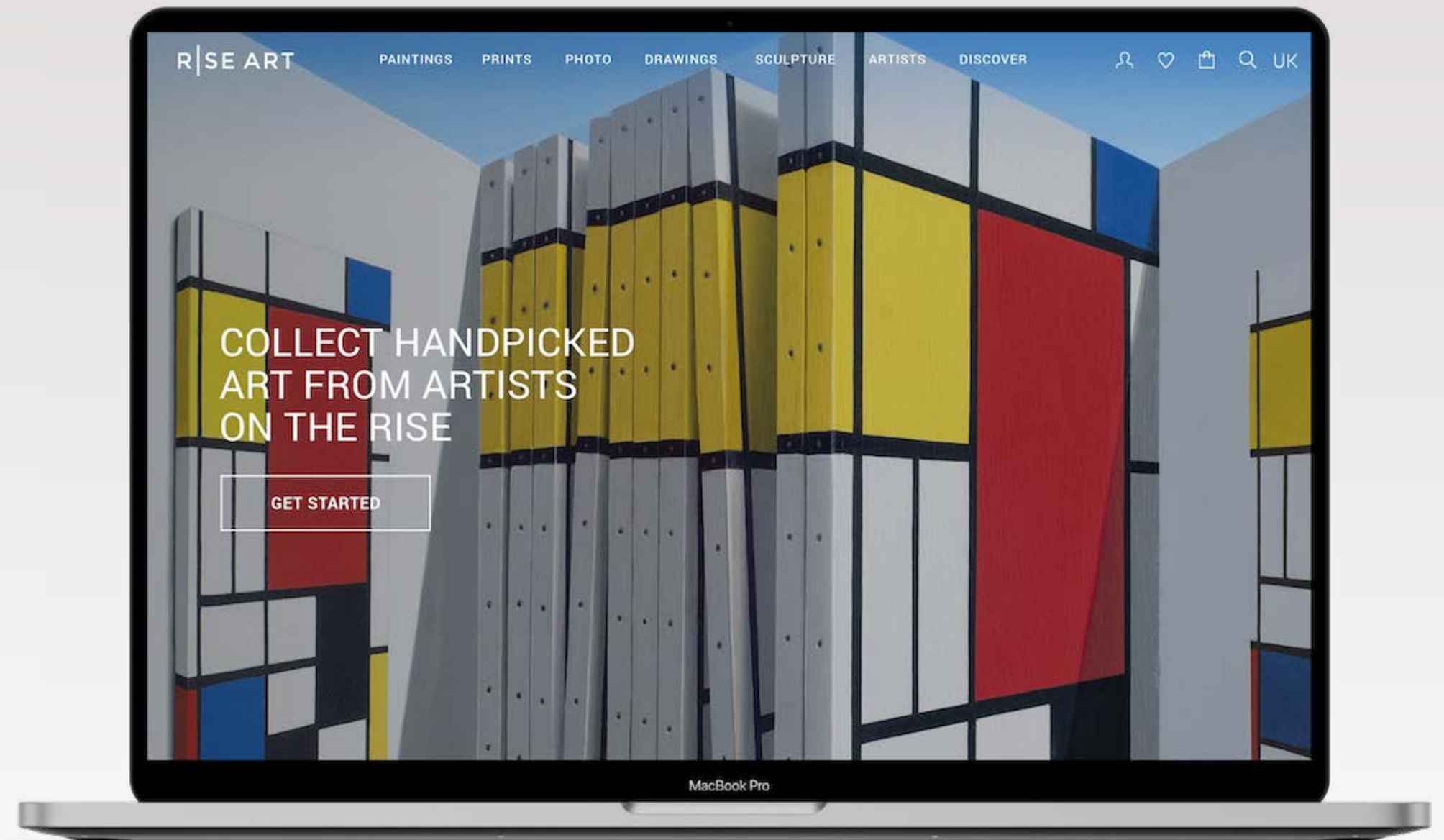


# ABOUT RISE ART

We act as a guide to, and commentator on the art world. Using a combination of technology and traditional expertise, we help those seeking high quality art for any setting.

Our 1000-strong, hand-selected roster includes artists at various career stages working across styles, subjects and media. Our broad-but-curated approach means that we can source credible artists for a range of settings and projects.

Our past workplace clients include Google, BT, WorkLife and a number of high-end independent designers, hotels and workspaces. We treat each project as unique, working closely with all stakeholders and our artists to produce projects that fit the brand's brief, aesthetic and values.



TRUSTED BY



WORK•LIFE



# TIMELINE OVERVIEW



INITIAL PROPOSAL	SITE VISIT	FINAL PROPOSAL	INVOICING	EXCECUTION
After speaking with you and learning more about the project's requirements, we will propose 4-6 artists with an idea of what they could do for this project, the price and lead time.	When the artist has been selected, we will join them to visit the site and discuss the project in more detail.	We will send a draft commission note, quote and supporting presentation including sketches outlining exactly what we will do, what it will cost and how it makes sense as a part of your broader project.	Once this is signed off, we will send an invoice for the first payment installment and any installation costs.	The artist will then complete the work on site during an agreed time slot.



# CASE STUDY

## BT/ TIM FOWLER

### REQUIREMENT

Two large walls in new BT offices to be furnished with artwork that fits with the brand's aesthetic and values.

### OUR SOLUTION

A bespoke commission from Tim Fowler; three works measuring up to 450 x 140cm.

The client wanted work by a local artist that spoke to their brand values of people, connection, future and energy.

Throughout the sign-off process, we provided supporting documents outlining to stakeholders the artist's suitability for the project.

### TIMELINE

Day 1: Initial proposal sent

Day 8: Artist selected

Day 14: Site visit with artist

Day 19: Final quote and supporting presentation sent

Day 26: Sign off from client

Day 34: Invoice paid

Day 47: Artwork completed and installed



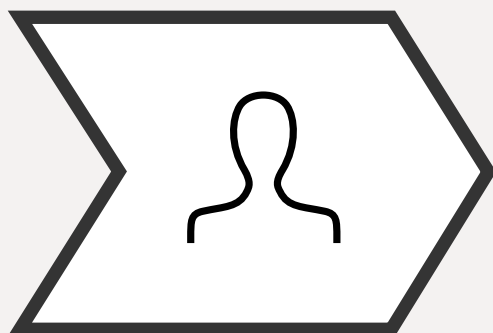


# TIM FOWLER / BT CASE STUDY



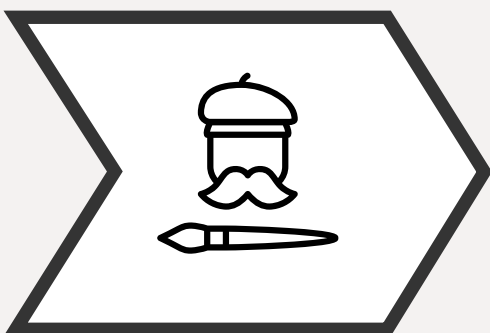


# PRICING STRUCTURE



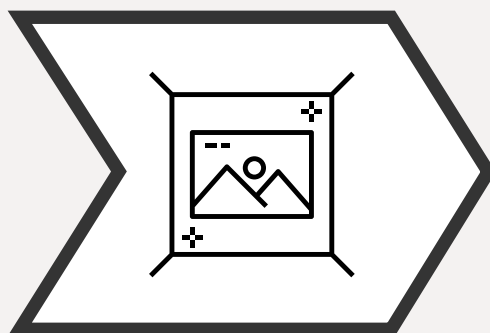
## CURATION AND ADVISORY SERVICE

Free of charge, including site visits, studio visits and time spent working on presentations, quotes and supporting materials.



## COMMISSIONED ARTWORK

Varies based on size/nature of the project and output. We can work to a specific budget from the beginning or present options at different price points.



## INSTALLATION

Where required, charged at £100/technician/hour, with additional costs for out-of-hours installation and discounted rates for longer (1+ day) install projects.



## ADDITIONAL CHARGERS

Delivery, framing, licensing and other charges apply to some projects, and are calculated on a case-by-case basis.

# YONI ALTER

Yoni Alter is a multimedia artist exploring the threshold between art and design. His vibrantly coloured works blend figuration and abstraction with a focus on colour, form and space. He works across painting, printmaking, sculpture and installation.

In the past, Yoni has had work commissioned by a number of institutions including the Tate, BOXPARK and Mayor of London.





# YONI ALTER / PAST PROJECTS





# REMI ROUGH

In the street art world, Remi Rough is a household name. His work combines the intuitive and rebellious spirit of street art with a more refined, painterly approach. His wall murals, noticeable for their hard-edged geometric style, can be found all over London.

Remi's work has been shown internationally and past collaborators include Art Basel, Converse and Haig Club.





# REMI ROUGH / PAST PROJECTS





# SARAH EMILY PORTER

Educated at the Slade School of Art and Chelsea College of Art, Sarah Emily Porter makes work that is heavily influenced by architecture, creating two and three-dimensional structures that foreground shape and colour.

In the past, the artist has had artworks and murals commissioned by Nobu, City of London Corporation and Westminster Gardens among others.





# SARAH EMILY PORTER / PAST PROJECTS





# NIKI HARE

Niki Hare is a self-taught painter based in Gloucestershire. Through a process of intricate layering and complex compositions, her canvases begin as typographical explorations and evolve into new visual languages.

Niki's past collaborators include Hilton and Area Environments. Her work has been exhibited internationally, including in Rise Art's own Soho gallery.





# NIKI HARE / PAST PROJECTS





# ALAIN CASTORIANO

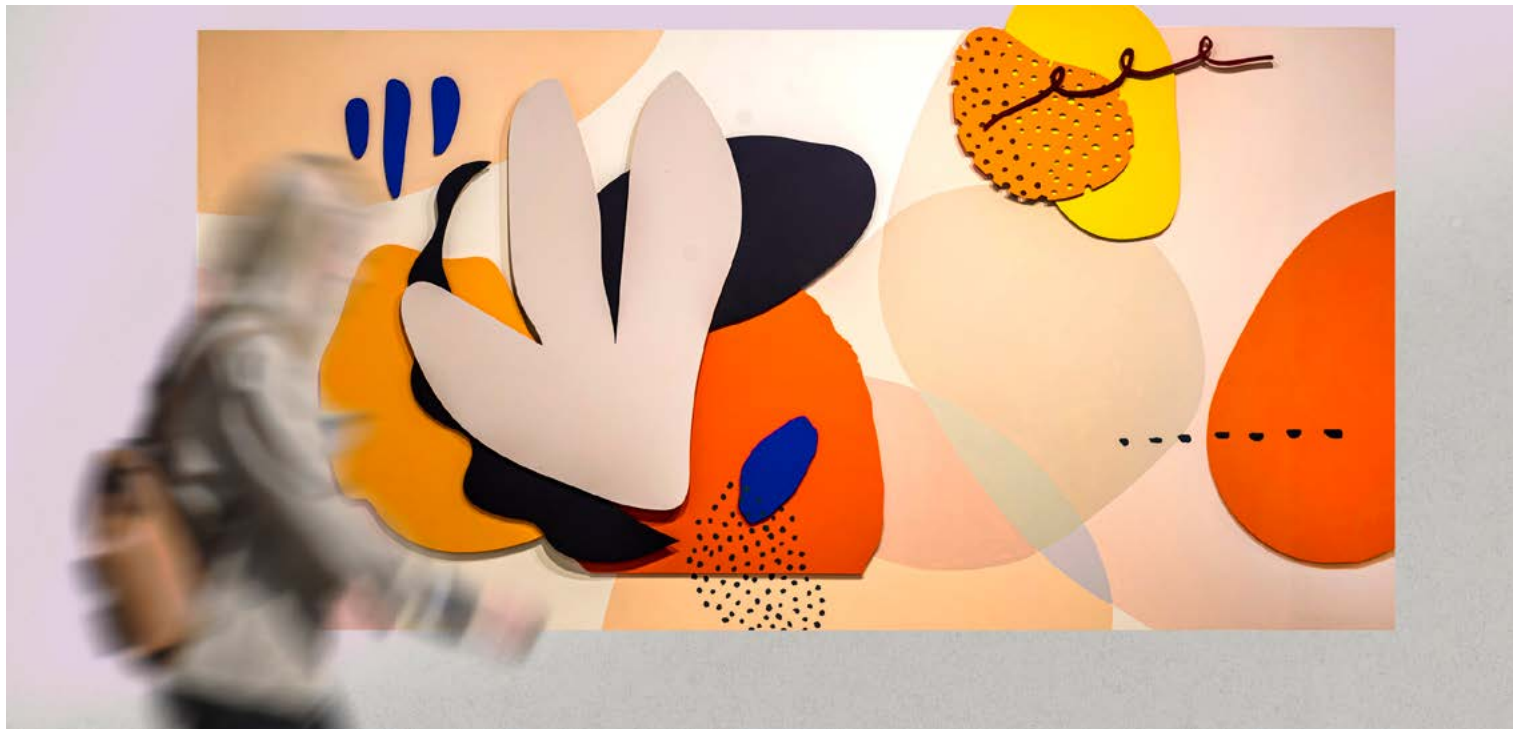
With a background in visual communication and design, Alain Castoriano creates jubilant compositions where colourful abstract forms overlap and interlock, jostling for the viewer's attention.

Alain's paintings and site-specific installations have been displayed internationally, and the artist occasionally uses his design background to help clients with brand identities, brochures, magazines, books and communication programs.





# ALAIN CASTORIANO / PAST PROJECTS





# JOHAN SÖDERSTRÖM

Johan Söderström's work focuses on three things: concept composition, and physical presence. With these strict parameters in mind, the artist creates pleasingly minimalistic compositions. He often uses DIY materials in his work, giving them a hardware-driven aesthetic.

Johan's work is held in a number of public collections across Sweden and Norway and he has shown widely across Europe since 1997.





# JOHAN SÖDERSTRÖM / PAST PROJECTS





# LEIGH BAGLEY

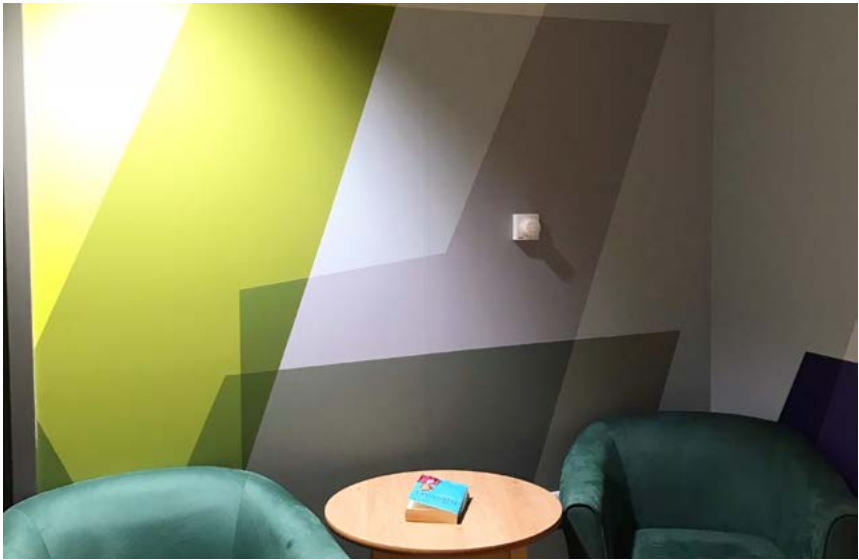
Since graduating from London's Royal College of Art, Leigh Bagley has built a bold and distinctive design language that revolves around bold colours and shifting forms. Parallel to his own practice, the artist also runs a textiles course at Glasgow School of Art.

Leigh has been commissioned for wall coverings and artworks by clients around the world including the NHS, Michael Laird Architects and Baillie Gifford .





# LEIGH BAGLEY / PAST PROJECTS





# MARY WEST

Mary West refers to her mural works as “living walls”. They drift between abstraction and figuration depending on the space and client, always bringing colour and life. She recently co-authored *Making Murals*, a practical guide to wall-painting at home.

Mary’s recent commissioners include restaurants The Swing and Kusakki, as well as a number of private offices and co-working spaces.





# MARY WEST / PAST PROJECTS





# NAOMI EDMONDSON

Hope and optimism run through all of Naomi Edmonson's work, which she completes under the pseudonym Survival Techniques. Her optimistic slogans bring colour and positivity to the spaces that they occupy.

Naomi has been painting murals for 7 years across the UK, Japan and USA. In 2018, she won the Rise Art Prize for street art, and has had her work shown globally.





# NAOMI EDMONDSON / PAST PROJECTS





# NICK CHAFFE

Nick Chaffe's bold and simple style transforms words and objects into impactful icons. His practice as an artist runs alongside a successful career in graphic design; in both, his work involves a process of stripping an image down to its essential elements to create a memorable impression.

Alongside a ten-metre mural in Manchester's Northern Quarter to celebrate the birth of his daughter, Nick has worked on commissions with a number of brands including Amnesty International and London Jazz Festival.





# NICK CHAFFE / PAST PROJECTS





# MATT JUKES

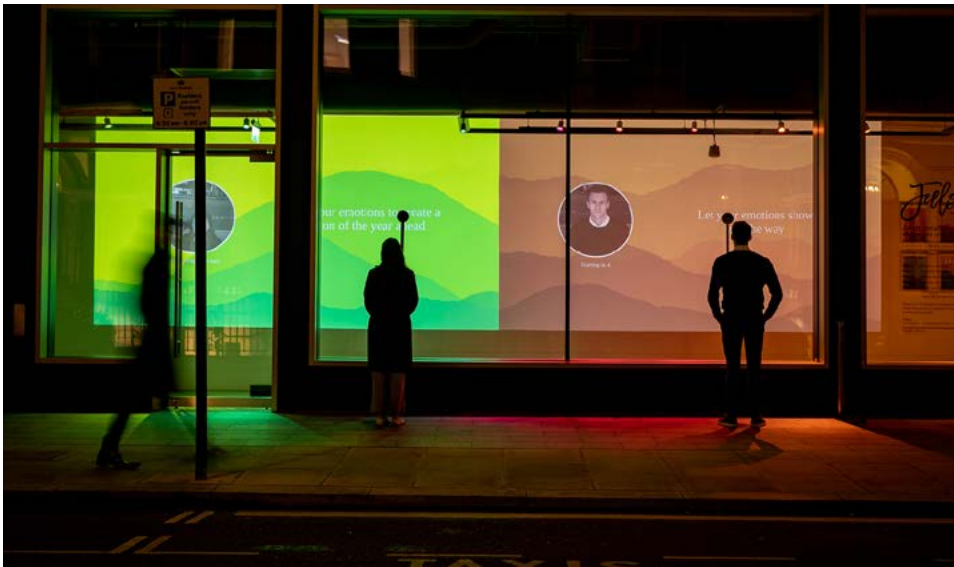
Colour and texture play a central role in Matt Jukes' practice, which explores emotion and memories. His multi-layered works - whether painted directly onto a wall or articulated through sculptural forms - take the shape of vaguely rendered landscapes and forms, ready for the viewer to project their own memories onto.

Matt's work can be found in rooms of the British Institution, Claridge's Hotel, aboard Saga Cruise Ships and in the homes of numerous private collectors across the globe.





# MATT JUKES / PAST PROJECTS





# CONTACT

SCOTT PHILLIPS | PHIN JENNINGS

[advisors@riseart.com](mailto:advisors@riseart.com)

Tel. +44(0)208 629 1525

R|SE ART

WWW.RISEART.COM